



UNEXPLAINED MASS IN PHOTO

Jefferson Hotel

Jefferson, Texas

December 26, 2011

OVERVIEW

❖ Series of 5 photographs for review

- 3 from Glynda's camera
 - Pictures 2 and 3 contain unexplained mass
- 2 from Cindy's camera

❖ Each taken during the same time frame

- Condition of Photographs
 - Left Auntie Skinners shortly after 11 pm heading back to the Jefferson Hotel
 - We were walking – weather was cool and clear
 - David, Jesse and Ava were walking ahead of Cindy, Gloria and Glynda

MAP OF THE AREA



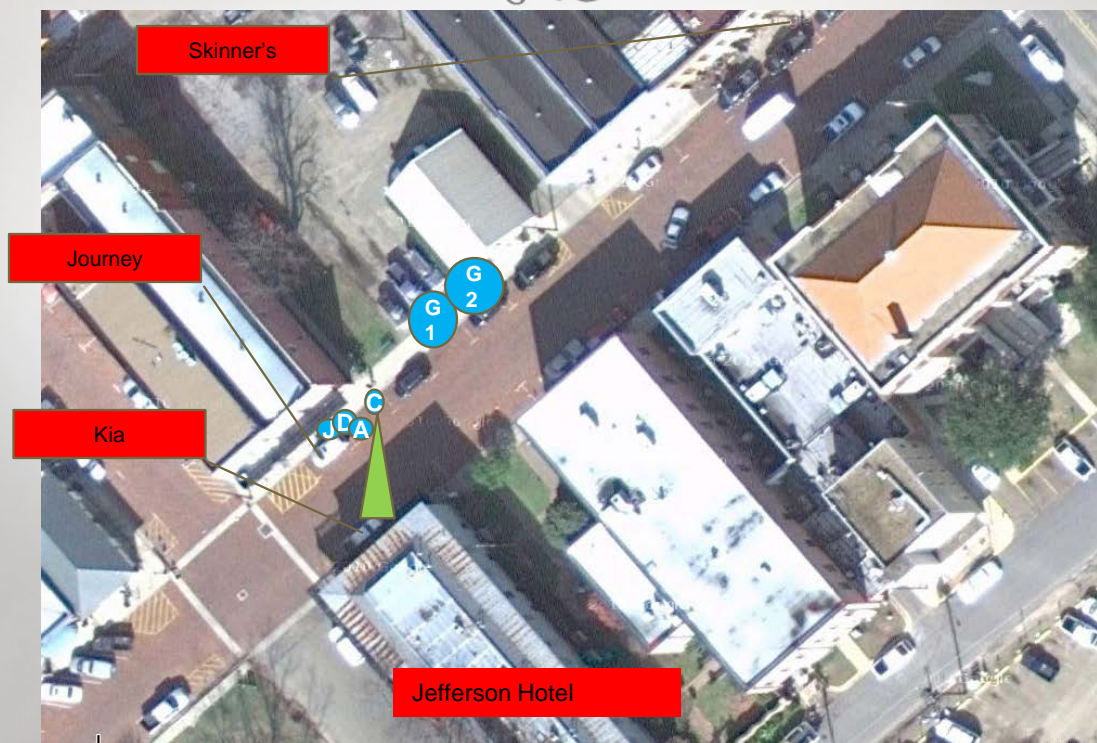
J = Jesse
A = Ava
D = David
G1 = Glynda
G2 = Gloria
C = Cindy

LOCATION OF PEOPLE



J = Jesse
A = Ava
D = David
G1 = Glynda
G2 = Gloria
C = Cindy

CINDY'S FIRST PICTURE



J = Jesse
A = Ava
D = David
G1 = Glynda
G2 = Gloria
C = Cindy

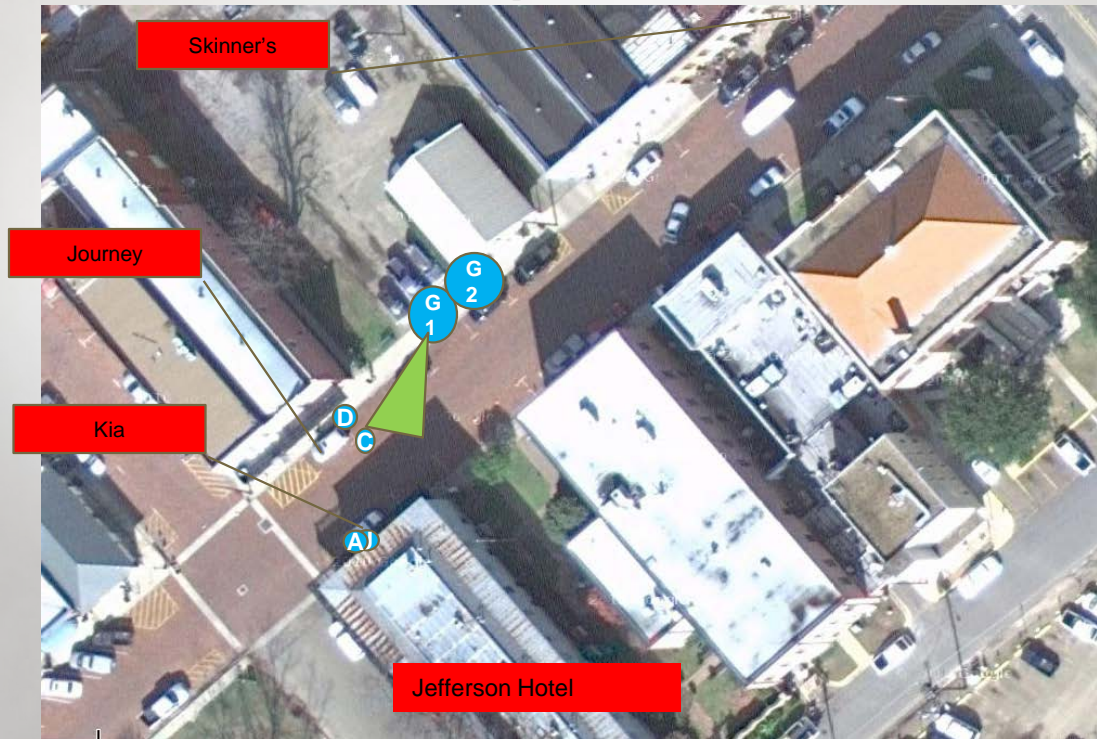
CINDY'S FIRST PICTURE - ORIGINAL



CINDY'S FIRST PICTURE - LIGHTENED



GLYNDA'S FIRST PICTURE



J = Jesse
A = Ava
D = David
G1 = Glynda
G2 = Gloria
C = Cindy

GLYNDA'S FIRST PICTURE - ORIGINAL



GLYNDA'S FIRST PICTURE - LIGHTENED



CINDY'S SECOND PICTURE



J = Jesse
A = Ava
D = David
G1 = Glynda
G2 = Gloria
C = Cindy

CINDY'S 2ND PICTURE - ORIGINAL



CINDY'S 2ND PICTURE - LIGHTENED



GLYNDA'S SECOND PICTURE

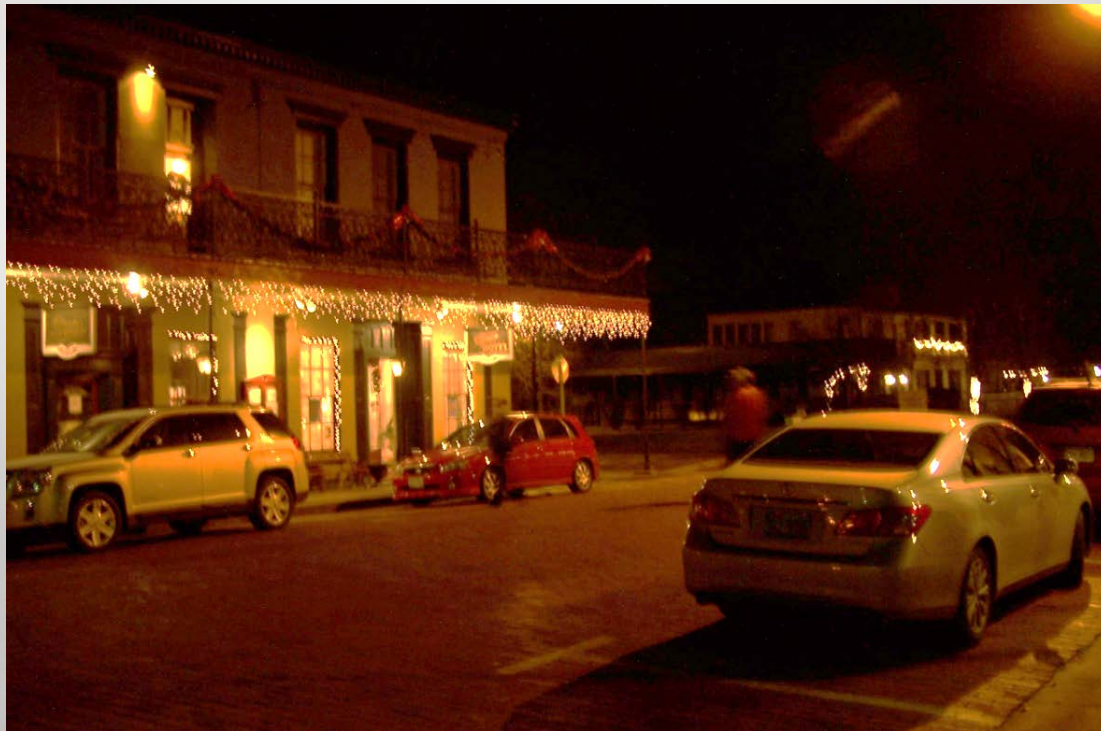


J = Jesse
A = Ava
D = David
G1 = Glynda
G2 = Gloria
C = Cindy

GLYNDA'S 2ND PICTURE - ORIGINAL



GLYNDA'S 2ND PICTURE - LIGHTENED



GLYNDA'S THIRD PICTURE

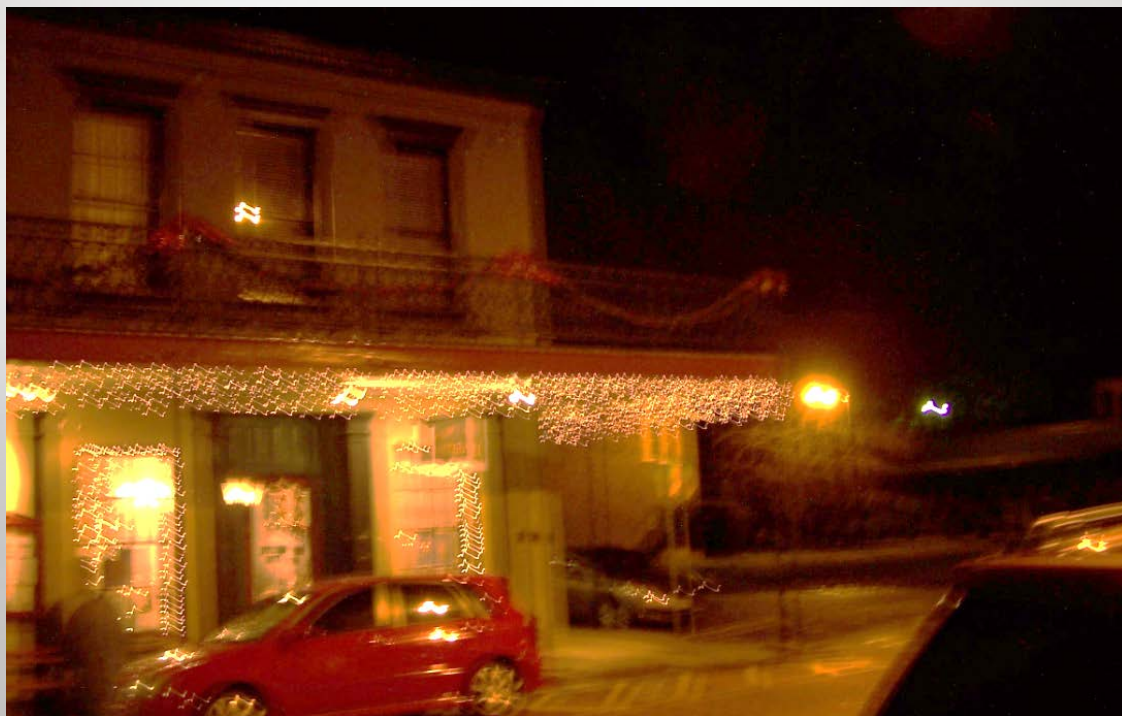


J = Jesse
A = Ava
D = David
G1 = Glynda
G2 = Gloria
C = Cindy

GLYNDA'S 3RD PICTURE - ORIGINAL



GLYNDA'S 3RD PICTURE - LIGHTENED



ANALYSIS

- ❖ All Persons are accounted for within the photographs
- ❖ In Cindy's Original Picture, as we approach the hotel, David, Jesse and Ava are in front and to the right of Cindy and her camera. We are at the Journey.
- ❖ In Glynda's Original Picture, she captures Cindy and David at the Journey while Jesse and Ava are already at the Jefferson Hotel's door.
- ❖ For Cindy's second picture she is now in the street taking a picture of the hotel. This is roughly the same time that Glynda was taking her first picture. David is still at the Journey.
- ❖ By the time Glynda takes her second picture, David is now crossing the street, Jesse, Ava and Cindy are in the Hotel. The door is opened. The Mass that shows up in Glynda's second picture is not solid enough to be anyone in motion and at this time only David remained outside the hotel. In addition there is no shadow cast by this mass as you can see with David.
- ❖ In Glynda's third photo, David is in the hotel, the door is closed and the mass has moved off to the front of the Kia. Glynda and Gloria were walking together and there was no one else on the street.
- ❖ As you can see in Cindy's second photo there is nothing in front of the car that would photograph this way. The car seen in the first pictures is too far away to cast a shadow back to the Kia and any shadow from that car would be seen in Cindy's second photo.

ANALYSIS / CONCLUSION

❖ First Mass Notations (slides 22 and 23)

- Though the picture is slightly blurry, David is still well defined.
- The size of the shadow does not correspond to anyone but Ava, but she has clearly already gone inside
- There is no shadow. Look at David's shadow as well as the lighting around the Hotel.
- There is clearly a face within the mass (see Slide 23)

❖ Second Mass Notations (slides 24 and 25)

- At this time, all people but Glynda and Gloria are inside the Hotel. The Door is closed.
- Though blurry, there is clearly a mass in front of the Kia
- Though it looks like it an outline of a person the "head" portion is a sign in the window. (See Slide 25)

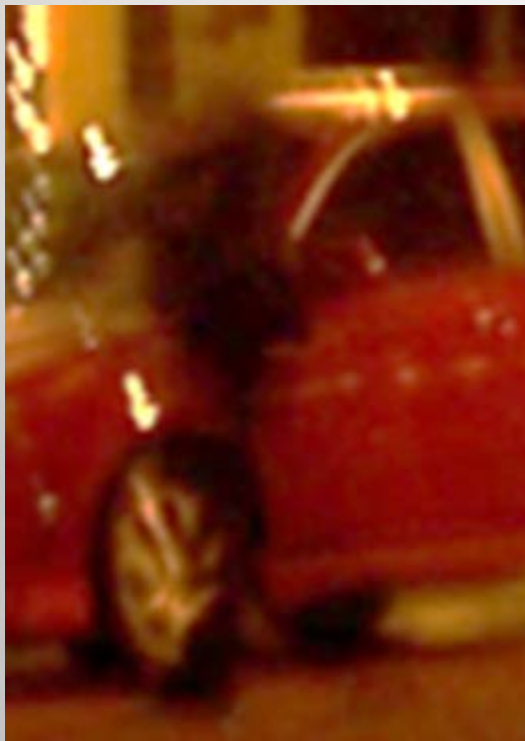
❖ Conclusion

- Unexplained Mass in two separate photographs

ANALYSIS



ANALYSIS



ANALYSIS



ANALYSIS

